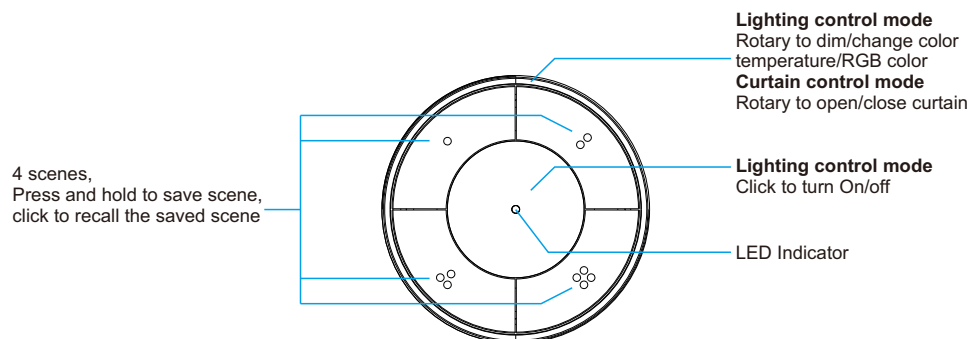


Zigbee Smart Remote



Important: Read All Instructions Prior to Installation

Function introduction



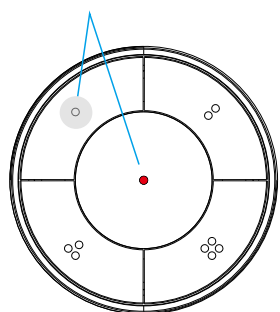
Product Data

- Standard ZigBee 3.0 lighting and curtain controller
- Enables to control single color/CCT/RGB/RGBW/RGB+CCT lighting device
- Enables to pair with ZigBee device through Touchlink
- Enables to Touchlink delete device
- Enables to Touchlink reset device
- Full support for various curtain types: roller blinds, shutter blinds, drapes, etc.
- Supports 1 group for binding max. 30 lighting devices
- Compatible with universal ZigBee Gateway products
- Battery powered remote with low power consumption

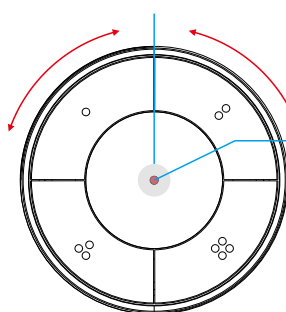
Protocol	ZigBee 3.0
Operation Voltage	3VDC (CR2450 battery)
Transmission Frequency	2.4GHz
Transmission Range (free field)	30m
Dimension	Φ 58x20mm
Waterproof Grade	IP20

Switch to lighting control mode

Press this two keys once at the same time, and the LED indicator in the middle flashes red



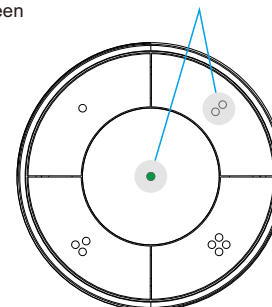
Under lighting control mode, click the center button 2 times to switch the rotary function between DIM/CCT/RGB



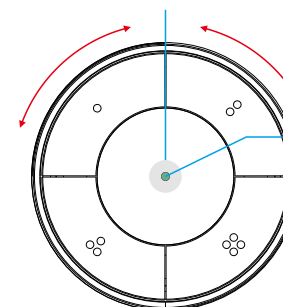
The indicator flash different times to indicate different function:
Flash once red means dim mode,
Flash twice red means CCT mode,
Flash three times red means RGB mode

Switch to curtain control mode

Press this two keys once at the same time, and the LED indicator in the middle flashes green

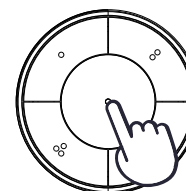


Under curtain control mode, click the center button 2 times to switch the rotary function between length/angle adjustment

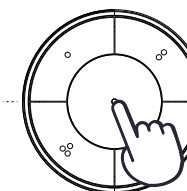


The indicator flash different times to indicate different function:
Flash once green means length mode,
Flash twice green means angle mode,

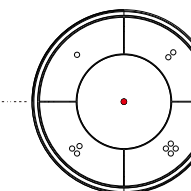
Network pairing/reset



1. Quickly short press the center button 5 times



2. Immediately long press the center button for 3 seconds.

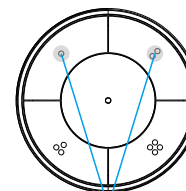


3. The LED indicator flash. The remote into network pairing mode or reset mode.

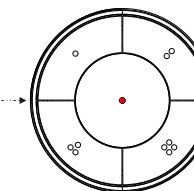
4. If the remote had not been added into a Zigbee gateway before, it will be found and added into the network, or the state will last for 3 minutes.
5. If the remote had been added into a network before, it will be removed from the network and into network pairing mode again.

Note: If the remote had not been added into a network, each time the remote was power on, it will enter network pairing mode automatically, and the state will last for 180s, click any button to exit.

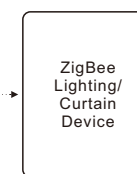
Touchlink with Zigbee lighting/curtain device



1. Press these two keys three times at the same time

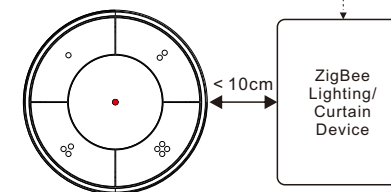


2. The LED indicator flash. Enter Touchlink mode.

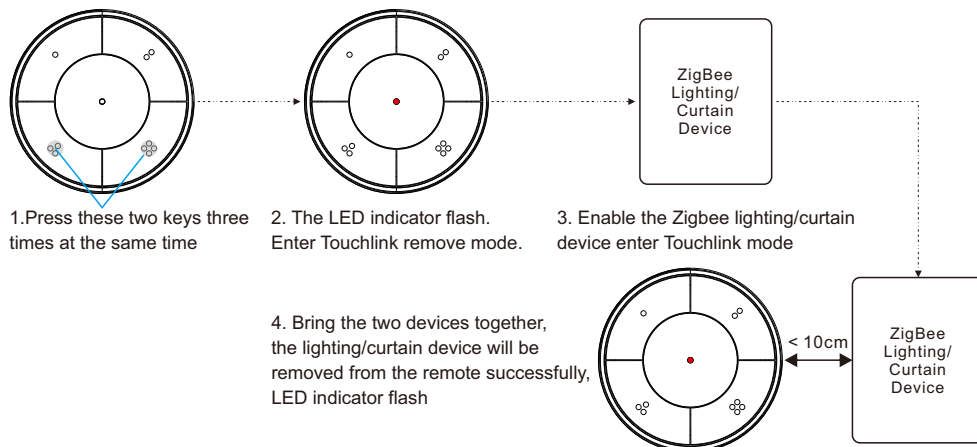


3. Enable the Zigbee lighting/curtain device enter Touchlink mode

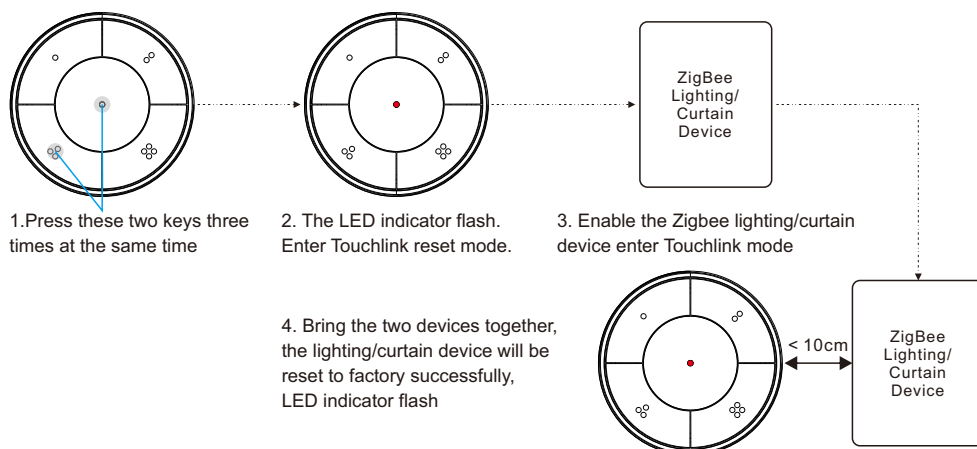
4. Bring the two devices together, they will be paired successfully, LED indicator flash



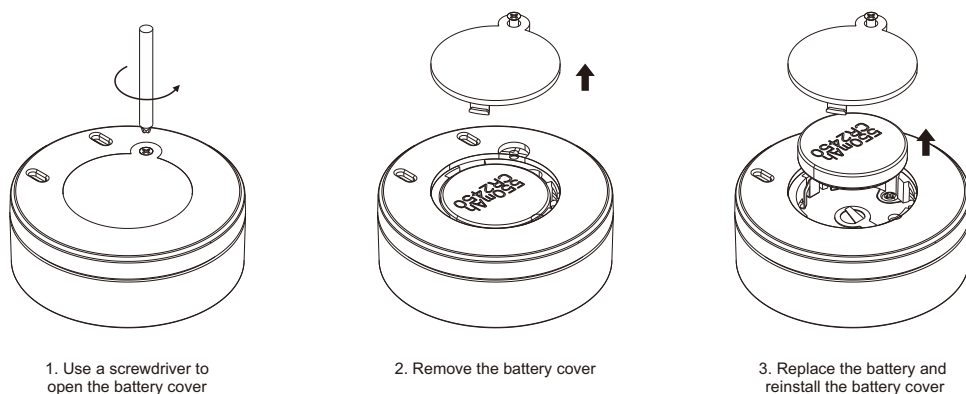
Remove a Touchlink paired Zigbee lighting/curtain device



Factory reset a Zigbee lighting/curtain device via Touchlink

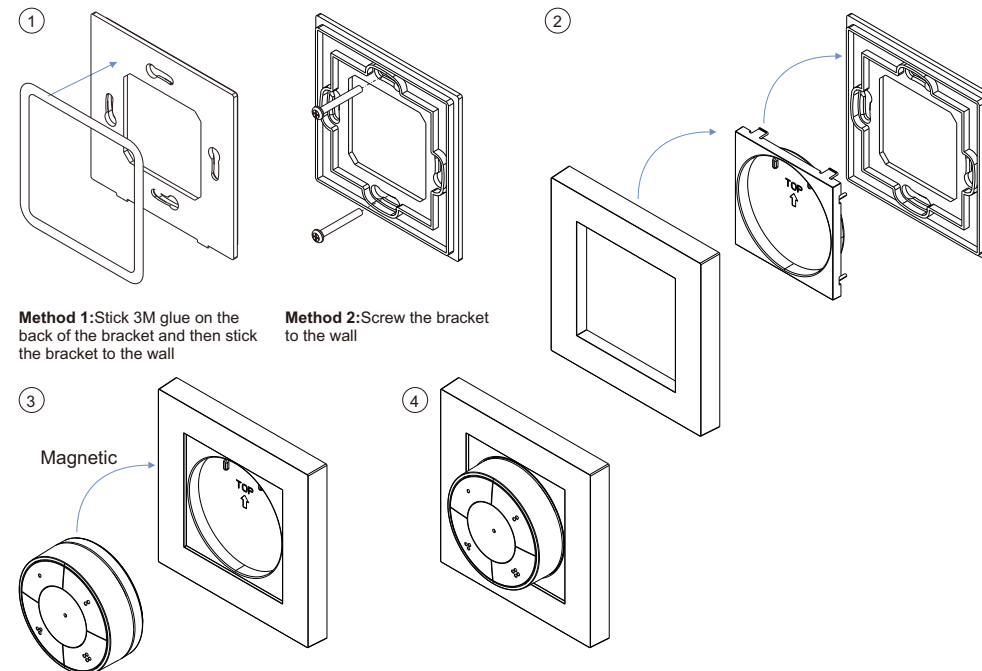


Replace Battery

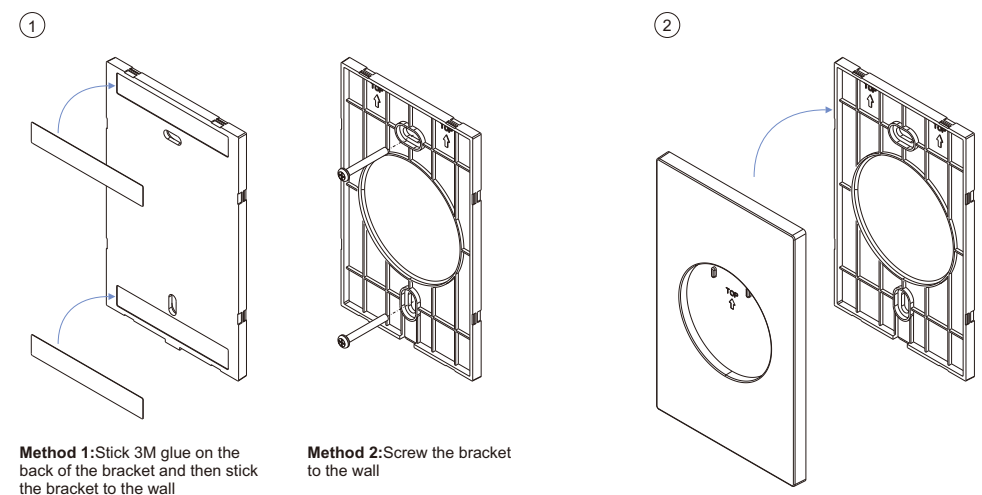


Installation bracket

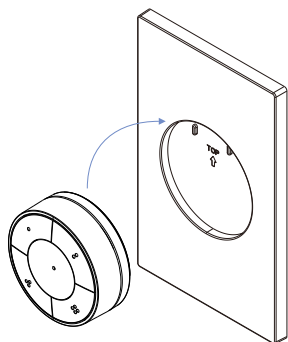
1. EU standard size bracket



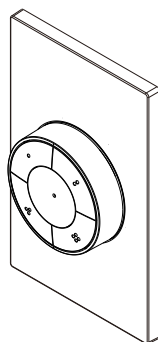
2. US standard size bracket



3



4



Battery Warnings & Safty

Warnings and Statements:

This product contains a CR Coin Cell Lithium Battery and meets the requirements of the **16 CFR Part 1263**. For your safety and to ensure proper operation, please carefully read and understand the following warnings and statements.

⚠ WARNING

- **INGESTION HAZARD:** This product contains a button cell or coin battery.
- **DEATH** or serious injury can occur if ingested.
- A swallowed button cell or coin battery can cause **Internal Chemical Burns** in as little as **2 hours**.
- **KEEP** new and used batteries **OUT OF REACH** of **CHILDREN**
- **Seek immediate medical attention** if a battery is suspected to be swallowed or inserted inside any part of the body.



Statements:

- **INDOOR USE ONLY**
- Remove and immediately recycle or dispose of used batteries according to local regulations and keep away from children. Do NOT dispose of batteries in household trash or incinerate.
- Even used batteries may cause severe injury or death.
- Call a local poison control center for treatment information.
- Do not install any battery other than CR2450 or its equivalent.
- Ensure the CR2450 operates at the nominal battery voltage (3VDC).
- Non-rechargeable batteries are not to be recharged.
- Do not force discharge, recharge, disassemble, heat above (manufacturer's specified temperature rating) or incinerate. Doing so may result in injury due to venting, leakage or explosion resulting in chemical burns.
- Ensure the batteries are installed correctly according to polarity (+ and -).
- Do not mix old and new batteries, different brands or types of batteries, such as alkaline, carbon-zinc, or rechargeable batteries.
- Remove and immediately recycle or dispose of batteries from equipment not used for an extended period of time according to local regulations.
- Always completely secure the battery compartment. If the battery compartment does not close securely, stop using the product, remove the batteries, and keep them away from children.
- If the battery leaks, do not touch or smell it, wipe the leakage from the battery compartment, and then replace the battery with a new one.
- If a battery leaks and the material contacts your skin or clothing, flush the exposed area thoroughly with running water. In case of eye contact, flush thoroughly with copious amounts of clean running water and seek immediate medical assistance.

Battery information:

Battery	Battery Type	Operation Voltage	Diameter
CR2450	Button Cell	3VDC	24.5mm(0.965inch)

Disposing of used batteries:

- When disposing of used batteries, please comply with governmental regulations or environmental public institutions' rules that apply in your country/area.
- Note and follow the **STATEMENTS** in **WARNINGS AND STATEMENTS**.